

AMPAG

From: AMPAG <ampag@ampag.com.au>
Sent: Tuesday, 4 February 2014 10:44 AM
To: AMPAG
Subject: February Sneak Peeks: opening nights and new collaborations

[Can't Read? View in Browser](#) | [Unsubscribe from this campaign](#)



Dear Ampag,

This month's opening nights won't disappoint - there are new works including State Theatre Company of South Australia's new adaptation of *The Seagull* dynamic collaborations such as West Australian Ballet at the Quarry with music by Radiohead and special season openings including the Sydney Symphony Orchestra's Gala performance to mark the arrival of its new Chief Conductor David Robertson, and Adelaide Symphony Orchestra's special Valentine's Day gala opening concert- a romantic night of Russian music.

If you happen to be in California, Massachusetts or Kentucky this month keep an eye out for Circus Oz - are performing ***Cranked Up*** in the US from Feb 8.

The major performing arts companies' education teams are also hitting the road with their education programs for primary and high school students gearing up, and plans are progressing for master classes and workshops coming up later this year.

The relationships between the major performing arts companies, fellow artists and artisans, our venues and the many diverse audiences and patrons are vital, as is the support at local, state and federal government levels. These relationships help us to foster creativity and build access. We've highlighted some of these in our new Sneak Peek Activities and Collaborations section below.

The performing arts help to activate individuals and communities, bringing enrichment and creative inspiration to our lives, building understanding of ourselves and each other.

Enjoy.

Image Above: ACO's Australian premiere of ***Winter Morning Walks***, featuring four-time Grammy Award-winner Dawn Upshaw

Activities and Collaborations

Check out the Majors' latest activities and initiatives across the country in our Publications section—the latest is a snapshot of MPA Indigenous activities across artform, artists, audiences and employment. We also have summaries of MPAs' work in education, the development of new works and new artists, and community engagement.

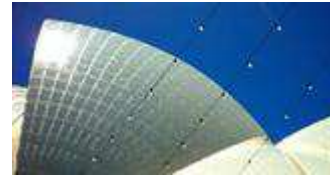
[Read more ...](#)



New AMPAG Publications

When is a House a Home?

What sort of relationship do the big performing arts venues have with the major performing arts companies?



This is a question often raised, but not easily answered.

[Read more ...](#)

This Month's Opening Nights

No matter how well you know an animal, no matter how well you read its moves, it is still an animal: wild, unpredictable and dangerous. A bit like love and fate. A bit like Carmen.



[Find out more ..](#)

OPERA AUSTRALIA SYDNEY

Carmen

2014-02-03

WEST AUSTRALIAN OPERA PERTH

Otello - Verdi

2014-02-04

O, beware my Lord, of jealousy! It is the green-eyed monster which doth mock the meat it feeds on.



[Find out more ..](#)

SYDNEY SYMPHONY ORCHESTRA SYDNEY

Mozart goes to the movies

2014-02-06

Mozart will make you laugh and sigh. And Haydn will wake you up! Two great composers of the 18th century in a concert to put a smile on your face.

[Find out more ..](#)



Set entirely to the music of Indie rock giants Radiohead, Juliet wakes next to her Romeo and recalls the events that led her to the tomb.

[Find out more ..](#)



WEST AUSTRALIAN BALLET PERTH

Ballet at the Quarry: Radio and Juliet

2014-02-07

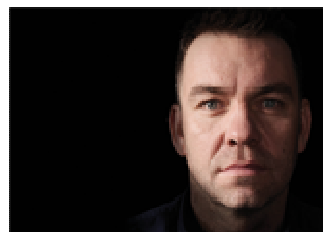
BELVOIR SURRY HILLS

Once In Royal David's City

2014-02-08

Fierce and eloquent, playful, big-thinking, tender, furious – Michael Gow's new play is an astonishing act of theatrical invention.

[Find out more ..](#)



BANGARRA DANCE THEATRE DEN HAAG

Kinship

2014-02-14

Bangarra makes its long awaited debut in the Holland Dance Festival. Choreographed by Artistic Director Stephen Page, 'Kinship' consists of two parts that take the audience on a spiritual theatrical journey from an age old past to the challenges of a modern identity.



[Find out more ..](#)

From Russia with Love! The ASO's 2014 Season Opening Gala celebrates St Valentine's Day in real style with a supremely romantic night of Russian music.



[Find out more ..](#)

ADELAIDE SYMPHONY ORCHESTRA ADELAIDE

Season Opening Gala

2014-02-14

THE AUSTRALIAN BALLET BRISBANE

Manon

2014-02-21

A naive girl on her way to a convent, Manon dreams of the city. Des Grieux, a young student, is instantly smitten by her, and they run away together. But once in Paris, Manon quickly succumbs to the lure of luxury, and her course is set for both tragedy and redemption.



[Find out more ..](#)

SYDNEY THEATRE COMPANY SYDNEY

Noises Off

2014-02-21

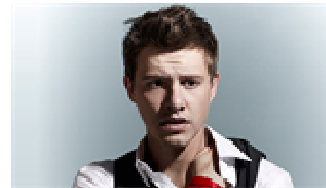
Will two separate love triangles, a dipsomaniac and lost contact lenses prevent the show from going on?

[Find out more ..](#)



Should you ever need my life, take it, it's yours. A paean to unrequited love, Anton Chekhov's *The Seagull* is quite simply one of the greatest plays of the modern era.

[Find out more ..](#)



STATE THEATRE COMPANY SOUTH AUSTRALIA ADELAIDE

The Seagull

2014-02-25

Members



PRINCIPAL PARTNER
Santos



AUSTRALIAN
CHAMBER
ORCHESTRA
RICHARD FORBES TT
ARTIST IN RESIDENCE



BELL
SHAKESPEARE



**MALTHOUSE
THEATRE**

Melbourne
Symphony Orchestra



MTC

MELBOURNE
THEATRE
COMPANY

musica viva
melodic to inspiring



Australian Major Performing Arts Group

Website: <http://www.ampag.com.au>
Email: ampag@ampag.com.au
Phone: +61 (02) 9253 5351



You are receiving this email because you have supplied us with your details from a form on our website, subscribed to this email list or are directly affiliated to the arts and/or related public policy.

Unsubscribe from this campaign | Unsubscribe from ALL campaigns permanently